

NOTES

EXIST. SUPERSTR. - Light steel pony truss (5) 8" I Beam stringers, and (2) 8" I's outside. Steel fair condition although very light. Plank very poor.
 EXIST. SUBSTR. - Abuts. of split granite well laid. Pointed with mortar. All good condition except for vertical cracks in retain walls about 15' from corners.
 STREAM - Back water from ANDROSCOGGIN RIVER and dam at Jay about 2 miles below. Nearly every spring water reaches Elev. 52.0. Extreme high water March 1936 at Elev 63.0. Low water present stage except when flash boards are removed from dam below.
 FOUND. - Present bridge rests on rock dumped into stream-bed. Sound 1' 10" left Sta 9+25. Rod penet. very easily 36" below water thru soft blue clay to firm material at Elev 7.6.
 APPROACHES - Surface treated gravel ---

RIDLEY BROOK

TONY DEMALLO

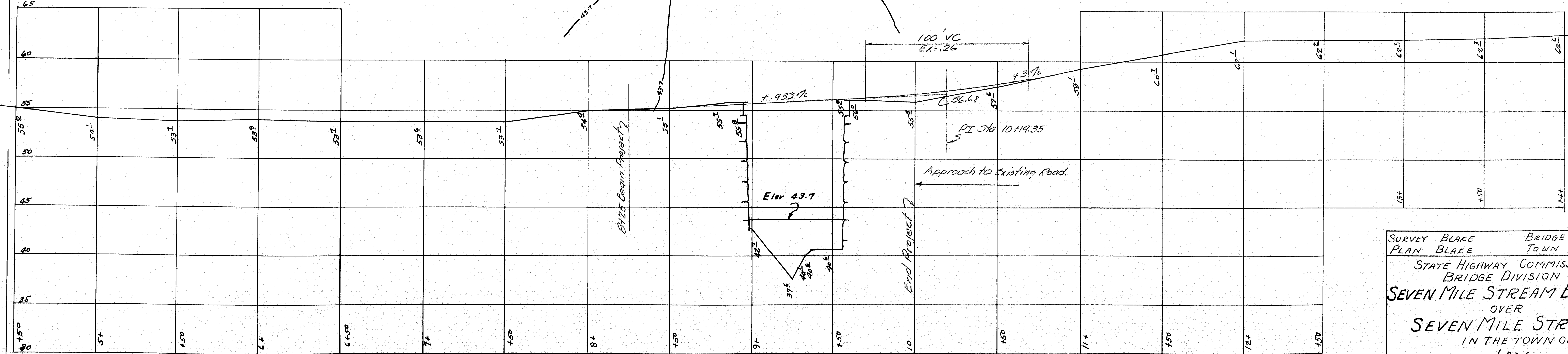
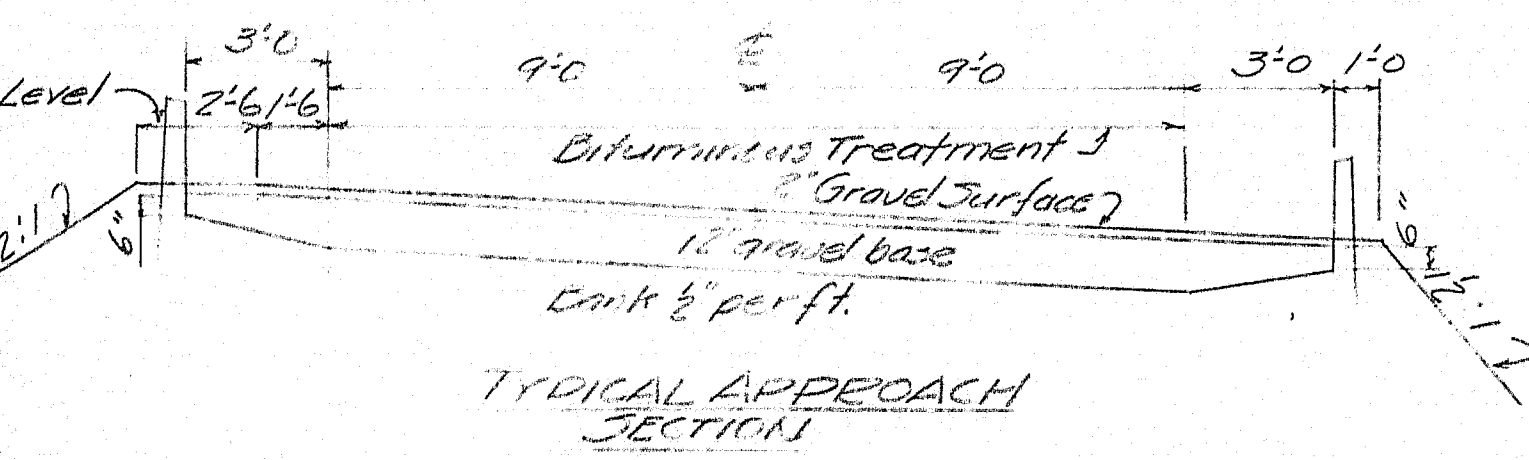
TONY DEMALLO

SEVEN MILE STREAM

PLAN
SCALE 1"=30'

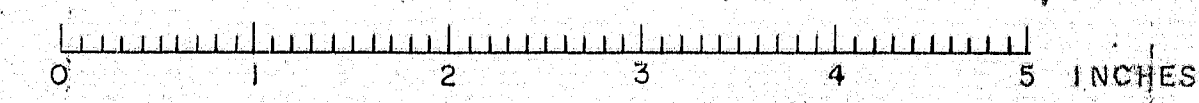
MARY RICHARDSON FIELD

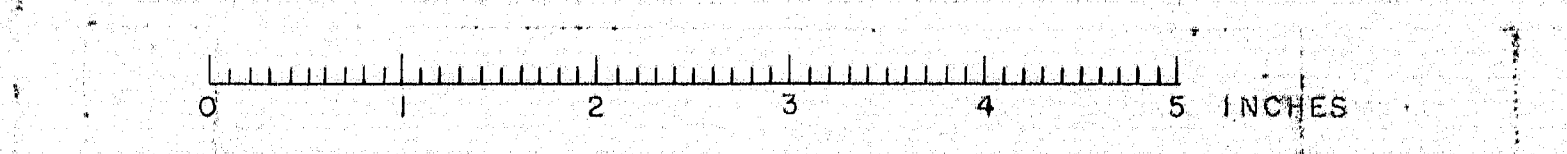
MARY RICHARDSON FIELD



PROFILE
SCALES HOR. 1"=30' VERT 1"=5'

SURVEY BLAKE BRIDGE 3801
 PLAN BLAKE TOWN 04-11
 STATE HIGHWAY COMMISSION
 BRIDGE DIVISION
SEVEN MILE STREAM BRIDGE
 OVER
SEVEN MILE STREAM
 IN THE TOWN OF
JAY
FRANKLIN COUNTY
 SHEET 1 OF 2 AUGUSTA, MAINE MARCH, 1941





REINFORCING STEEL		
Mark	Size	No Length
A1	$\frac{1}{2}$ " ϕ	72 12'-6"
A2	$\frac{3}{4}$ " ϕ	48 8'-0"
A3	$\frac{1}{2}$ " ϕ	41 4'-9"
A4	$\frac{3}{4}$ " ϕ	20 4'-6"
A5	$\frac{1}{2}$ " ϕ	40 4'-3"
D1	$\frac{3}{4}$ " ϕ	50 1'-6"
C1	"	8 9'-0"
C2	"	4 11'-6"
C3	"	4 8'-6"
C4	"	4 11'-0"
C5	"	2 12'-0"
C6	"	2 13'-6"
C7	"	4 7'-6"
C8	"	2 9'-6"
C9	"	2 11'-6"
K	"	16 8'-0"

DESIGN	EVERETT	TOWN	04-11
TRACED G.C.W.	CHECK <i>Hamilton</i>	BRIDGE	3801

STATE HIGHWAY COMMISSION
BRIDGE DIVISION

SEVEN MILE STREAM BRIDGE

OVER

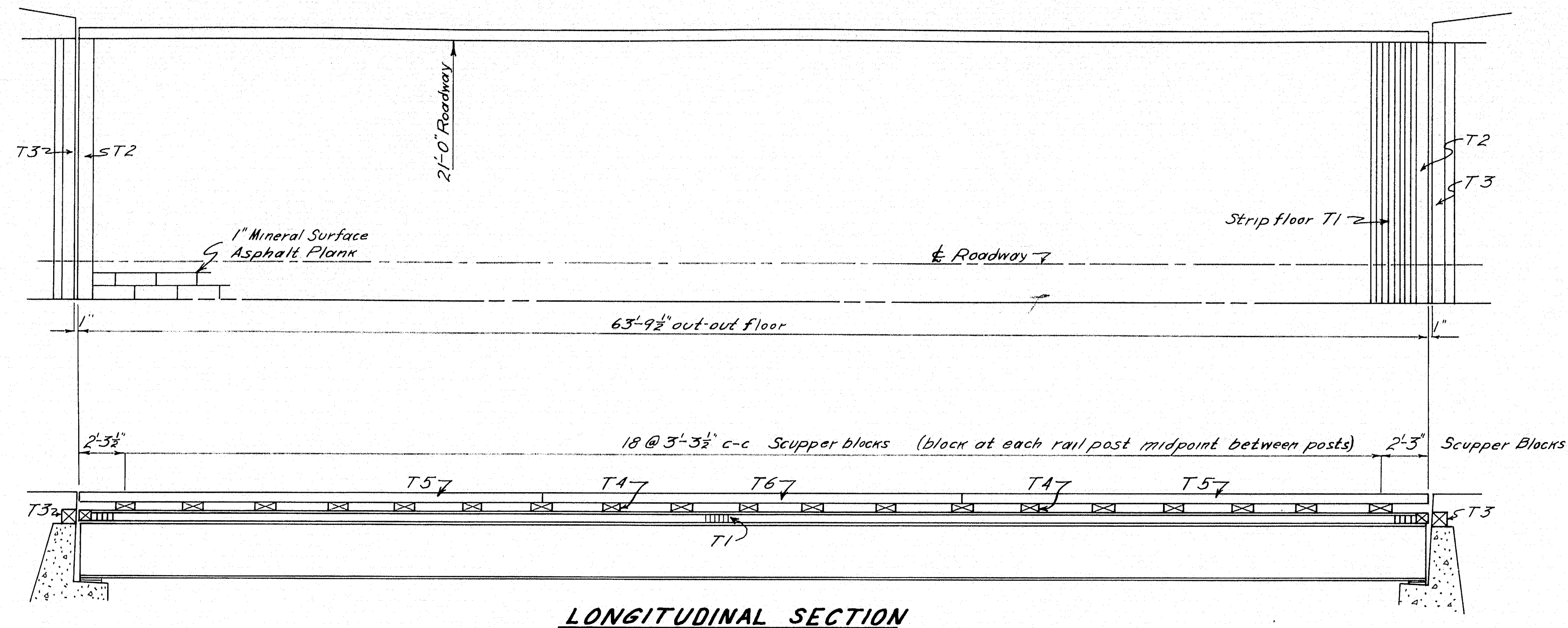
SEVEN MILE STREAM

IN THE TOWN OF

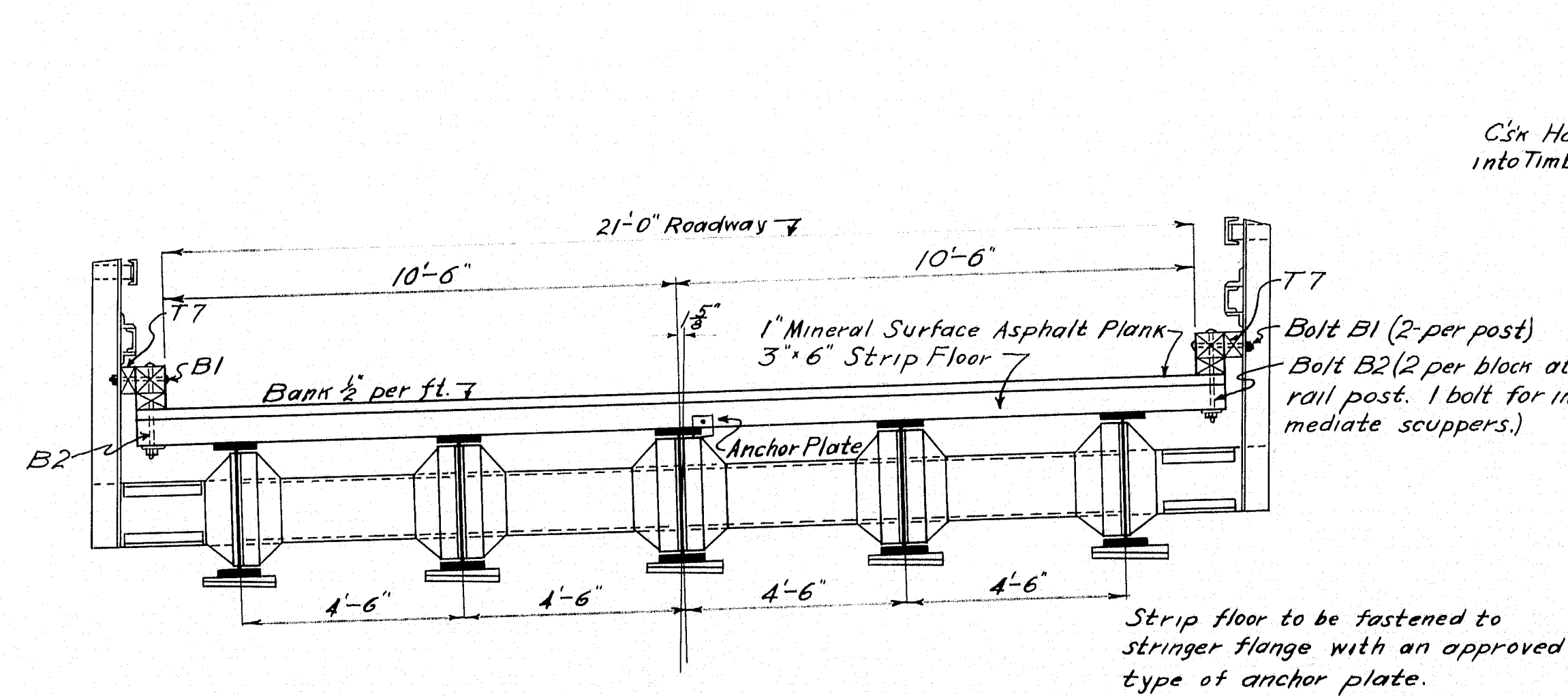
JAY — FRANKLIN COUNTY

SUBSTRUCTURE

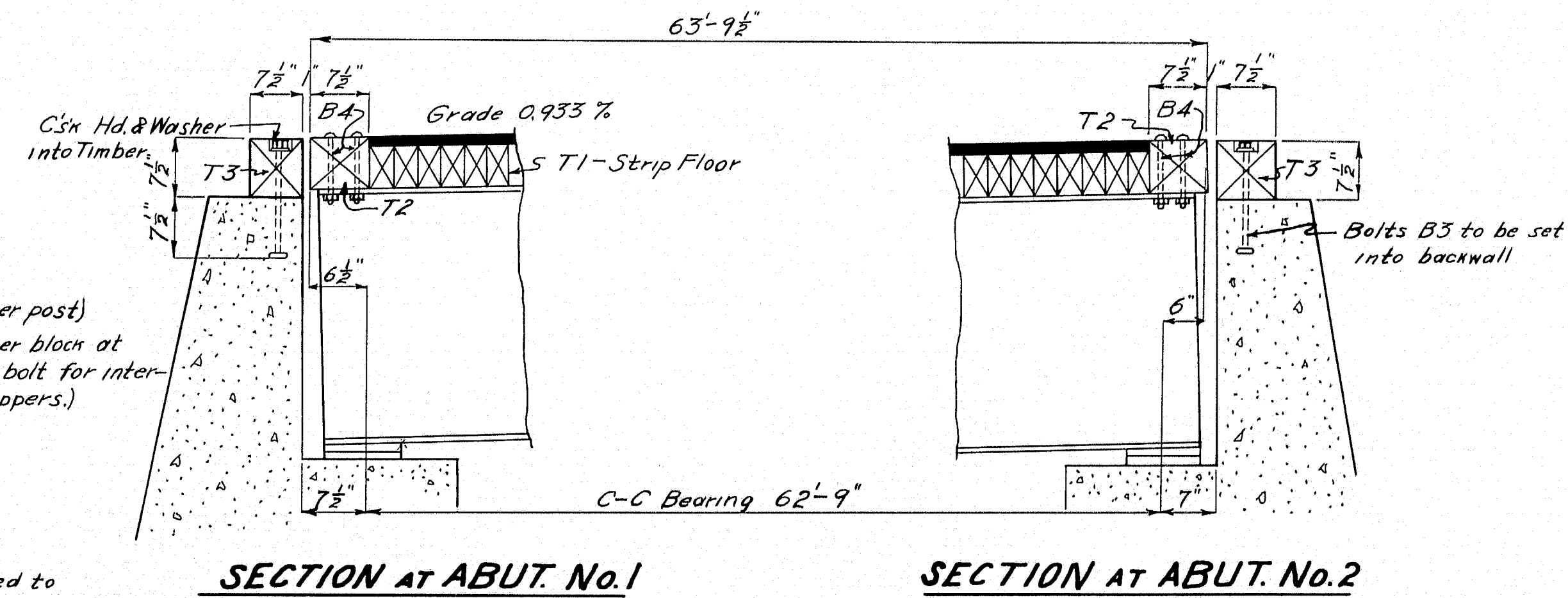
SHEET 2 OF 4 AUGUSTA, MAINE JUNE 1941



LONGITUDINAL SECTION



TRANSVERSE SECTION



SECTION AT ABUT. No. 1

SECTION AT ABUT. No. 2

TIMBER SCHEDULE

Mark	No.	Ord Size	Fin. Size	Length
T1	290	3" x 6"	2 1/2" x 5 1/2"	22'-0"
T2	2	8" x 8"	6 3/4" x 7 1/4"	22'-0"
T3	2	8" x 8"	7 1/4" x 7 1/4"	21'-11 1/2"
T4	38	4" x 6"	3 1/2" x 5 1/2"	1'-0"
T5	4	6" x 6"	5 1/2" x 5 1/2"	22'-0"
T6	2	6" x 6"	5 1/2" x 5 1/2"	19'-9"
T7	20	4" x 6"	3 1/2" x 5 1/2"	0'-9"

All timber shall be pressure treated.

Required: 1380 sq. ft. 1" Asphalt Plank
485 Anchor Plates

BOLT LIST

Mark	Size	Length	No.	Type	Washers
B1	3/4" φ	0'-10"	40	Carr.	—
B2	3/4" φ	1'-6"	58	Carr.	58 cast.
B3	3/4" φ	1'-3"	20	Mach.	20 plate
B4	3/4" φ	0'-9"	20	Carr.	—

Machine bolts to be U.S. Std. Hex. Hd. & Nuts.
Carriage bolts to have U.S. Std. Hex. Nuts.

DESIGN: W.C.
TRACED: W.L.S.
CHECKED: H.A.M.
TOWN: 04-11
BRIDGE: 3801

STATE HIGHWAY COMMISSION
BRIDGE DIVISION
SEVEN MILE STREAM BRIDGE
OVER
SEVEN MILE STREAM
IN THE TOWN OF
JAY
FRANKLIN COUNTY
SUPERSTRUCTURE DETAILS
SHEET 3 OF 4 AUGUSTA, ME. JULY, 1941

